



ST8100 CATALOG
STEEL STAGING SYSTEM



Real Work Starts With Us.™

Everyday we bring real passion, real pride, and real dedication to the work we do. Our people and our products are the foundations of thrilling events and incredible structures all over the world. Great experiences start with Bil-Jax®. The real work to create them begins with each of us.

From the bricklayer's 3-story scaffolding setup, to a 50-meter by 20-meter, multi-level concert stage, to the 150-foot tall system scaffold rig surrounding a commercial construction project, it's fair to say that many of the world's most challenging jobs start with Bil-Jax®. And with good reason. In 1947, Bill & Jack Ashenfelter started Bil-Jax® Scaffolding Company with a goal of making multi-story construction work faster, easier, and safer. As their reputations grew, with real grit and determination to solve their next big customer challenge, they've been driving some of the industry's biggest, tallest, strongest — and smartest innovations ever since. Indeed, Bil-Jax® is considered by many demanding end-users to be the Gold-Standard in the event and scaffolding industry. And that's probably why so many event, construction, and facilities maintenance professionals prefer to start all the real work they do with Bil-Jax®.

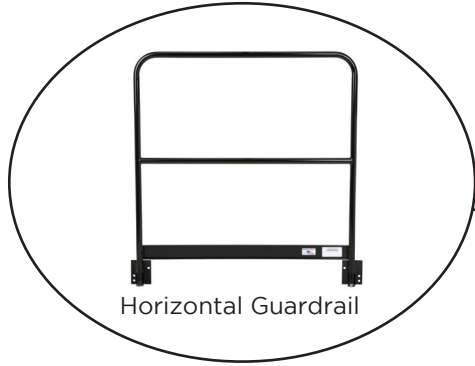
STAGING. TENT FLOORING. SEATING.

Contact your BilJax representative or the factory for our Staging, Seating and Flooring catalog. All photos and drawings are for illustration only. Always concerned with the improvement of the quality of the products, the manufacturer reserves the right to modify specifications without prior notice. Follow all applicable ANSI and OSHA Codes and Regulations for use of this equipment. Do not use this product in areas where user can come in contact with live power.

TABLE OF CONTENTS

ST8100 Steel Staging System

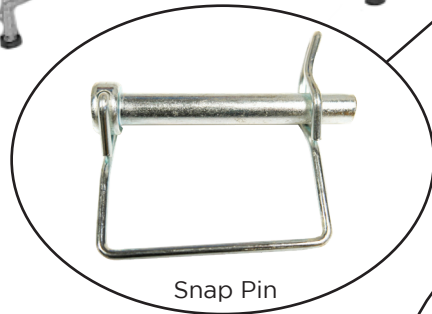
- Decks 6-7
- Legs 8
- Sleeves 8
- Base Pads 8
- Bracing 9
- Guardrails 9
- Guardrail Cart 9
- Storage Carts 10
- Accessories 10
 - Snap Pins
 - T-Handle
- Riser Adapter 10
- Skirting 11
- Build-Up Frames 11
- Storage Racks 12
- Stairs 13
 - Quick Stair
 - Ultra Stair
- Ramp 14
 - Access Ramp



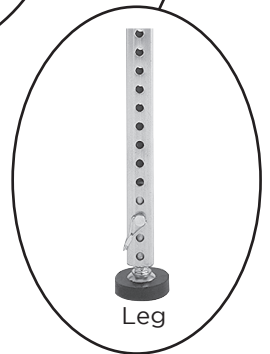
Horizontal Guardrail



Ultra Stair

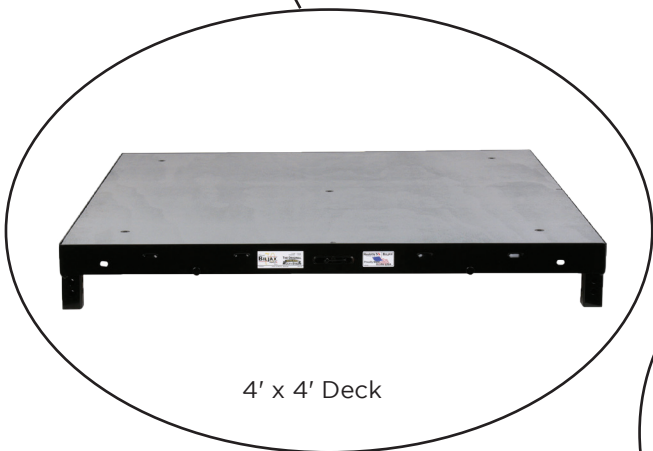


Snap Pin

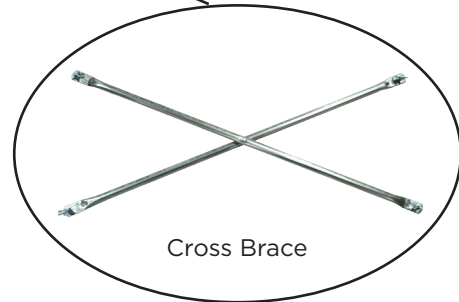


Leg

ST8100 STEEL STAGING SYSTEM



4' x 4' Deck



Cross Brace



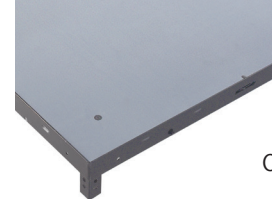
Base Pad

DECKS

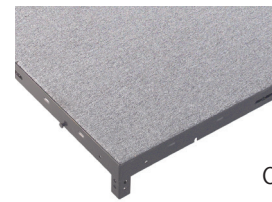
- Steel frame with plywood deck
- Standard size: 4' x 4'
- Available in a variety of different tops
- Designed for 1 1/2" W legs
- Replacement tops available

4' X 4'

PART #	DESCRIPTION	WT.
0106-039-6	ST8100 Deck - 4' x 4', Gray Paint	80
0106-052-3	ST8100 Deck - 4' x 4', Gray Carpet	78
0106-039-7	ST8100 Deck - 4' x 4', Black HDPE Quadripple	83
0106-039-13	ST8100 Deck - 4' x 4', Faux Hardwood, Pecan Stain	69
0106-039-14	ST8100 Deck - 4' x 4', Faux Hardwood, Gray Stain	69
0106-039-15	ST8100 Deck - 4' x 4', Faux Hardwood, Non-Stained	69



0106-039-6



0106-052-3

2' X 4'

PART #	DESCRIPTION	WT.
0106-028-6	ST8100 Deck - 2' x 4', Gray Paint	46
0106-053-3	ST8100 Deck - 2' x 4', Gray Carpet	48



0106-039-7



0106-039-13



0106-039-14



0106-039-15

ST8100 STEEL STAGING SYSTEM

4' X 4' 45°

PART #	DESCRIPTION	WT.
0106-029-6	ST8100 Deck - 4' x 4' 45°, Gray Paint	51
0106-054-3	ST8100 Deck - 4' x 4' 45°, Gray Carpet	53



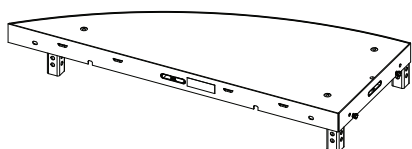
0106-029-6

ROUND

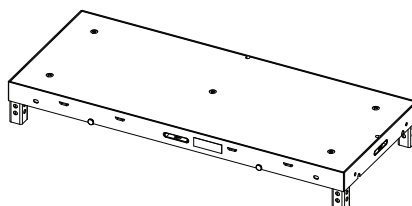
PART #	DESCRIPTION	WT.
0106-385-6	ST8100 Deck - 4' x 4' 1/4 Round, Gray Paint	80
0106-346-6-1	ST8100 Deck - 19" x 4', Left 1/4 Round, Gray Paint	26
0106-346-6-2	ST8100 Deck - 19" x 4', Right 1/4 Round, Gray Paint	26
0106-382-6	ST8100 Deck - 19" x 4', Intermediate, Gray Paint	49



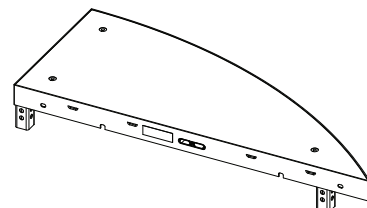
0106-385-6



0106-346-6-1



0106-382-6



0106-346-6-2

OTHER

PART #	DESCRIPTION	WT.
0106-070-6	ST8100 Deck - 1' x 4' Deck, Gray Paint	42
0106-231-6	ST8100 Deck - 2' x 2' Deck, Gray Paint	24
0106-076-6	ST8100 Deck - 2' x 6' Deck, Gray Paint	70
0106-122-6	ST8100 Deck - 3' x 4' Deck, Gray Paint	65

REPLACEMENT TOPS

PART #	DESCRIPTION	WT.
0106-0191-1	ST8100 Replacement Deck - 4' x 4', Gray Paint	30
0106-057-3	ST8100 Replacement Deck - 4' x 4', Gray Carpet	34
0106-12-7	ST8100 Replacement Deck - 4' x 4', Black HDPE Quadripple	38

LEGS

- Galvanized steel square tube
- Perforations every 1"
- Require a base pad and two snap pins

PART #	DESCRIPTION	WT.
0065-0298-012	ST8100 Leg/AS2100 Sleeve - 1 1/2" x 12" L	2
0065-0298-024	ST8100 Leg/AS2100 Sleeve - 1 1/2" x 24" L	4
0065-0298-030	ST8100 Leg/AS2100 Sleeve - 1 1/2" x 30" L	4
0065-0298-036	ST8100 Leg/AS2100 Sleeve - 1 1/2" x 36" L	5
0065-0298-048	ST8100 Leg/AS2100 Sleeve - 1 1/2" x 48" L	7
0065-0298-144	ST8100 Leg/AS2100 Sleeve - 1 1/2" x 144" L	21

Legs available in 1" increments



SLEEVES

- Used to make an adjustable leg
- One sleeve and one snap pin are needed to make a leg adjustable
- Must have a 6" overlay

PART #	DESCRIPTION	WT.
0065-0299-024	ST8100 Sleeve/AS2100 Leg - 1 3/4" x 24" L	4
0065-0299-030	ST8100 Sleeve/AS2100 Leg - 1 3/4" x 30" L	5
0065-0299-036	ST8100 Sleeve/AS2100 Leg - 1 3/4" x 36" L	6
0065-0299-048	ST8100 Sleeve/AS2100 Leg - 1 3/4" x 48" L	7
0065-0299-144	ST8100 Sleeve/AS2100 Leg - 1 3/4" x 144" L	25

Sleeves available in 1" increments



BASE PADS

- Rubber base pad
- Non-marring
- Adjustable up to 1 1/4"
- Are needed with a leg and/or sleeve
- Need a snap pin to secure to leg

PART #	DESCRIPTION	WT.
0030-086	Stage Base Pad without Collar	1
0030-115BK	Base Plate - Rigid	3
0082-0740	Rubber Pad for Base Plate	1
0032-613	Leveling Jack - 8", Rigid	4



0030-086

ST8100 STEEL STAGING SYSTEM

BRACING

- Two options available
- Cross base includes bolt and wing nut
- Horizontal are faster to setup
- Horizontal are great for low stage heights

PART #	DESCRIPTION	WT.
0010-21	Staging Cross Brace	8
0106-06-101	Horizontal Brace - 4' L, Starter	8
0105-06-102	Horizontal Brace - 4' L, Continuous	10



GUARDRAILS

- Attach to stage deck with nut and bolt
- Bil-Jax recommends on stage heights above 23"
- Vertical guardrails are required at stage heights above 30"

PART #	DESCRIPTION	WT.
0106-214-2	ST8100 Guardrail - 2' W, Horizontal	18
0106-214-4	ST8100 Guardrail - 4' W, Horizontal	24
0106-223-2	ST8100 Guardrail - 2' W, Vertical	22
0106-223-4	ST8100 Guardrail - 4' W, Vertical	32



0106-214-4



0106-223-4

GUARDRAIL CART

- Hold up to 16 guardrails

PART #	DESCRIPTION	WT.
0105-35-32	Guardrail Cart	105



0105-35-32

STORAGE CART

- Horizontal holds up to 14 decks
- Vertical holds up to 10 decks
- Vertical cart fits through 36" doorway

PART #	DESCRIPTION	WT.
0106-068	ST8100 Storage Cart - Horizontal	187
0106-390	ST8100 Storage Cart - Vertical	138



0106-390



0106-068

ACCESSORIES

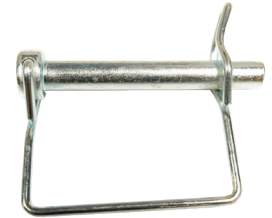
PART #	DESCRIPTION	WT.
0068-061-50	Snap Pin - 2 3/8", 50 pack	6
0068-102-50	Snap Pin - 4 1/2", 50 pack	12
0082-0555	T-Handle Wrench	1
0106-395	T-Handle Extension	1



0106-395



0082-0555

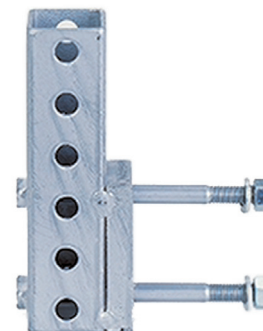


0068-061

RISER

- Used to make tiered stages

PART #	DESCRIPTION	WT.
0106-094	ST8100 Riser Socket	2
0106-413-4	ST8100 Chair Rail - 4'	7
0106-096	ST8100 Chair Rail Clamp (2" x 2" not supplied)	1



0106-094



0106-096

ST8100 STEEL STAGING SYSTEM

SKIRTING

- Black box pleat
- Skirting is purchased in 8' sections
- Length is required when purchasing
- Includes velcro sewn in

PART #	DESCRIPTION	WT.
0106-172	F-Clip - 50 pack	1
0106-206	Skirting - 4" - 18"	
0106-195	Skirting - 19" - 30"	
0106-196	Skirting - 31" - 39"	
0106-197	Skirting - 40" - 60"	



0106-172

Skirting

BUILD-UP FRAMES

- Used for higher height stages
- Offer quick and secure stacking
- Include built in bracing
- Support 1 1/2" W legs

PART #	DESCRIPTION	WT.
0106-083	ST8100 Build Up Frame - 4' H, Continuous	33
0106-084	ST8100 Build Up Frame - 4' H, Starter	32
0106-085	ST8100 Build Up Frame - 2' H, Continuous	20
0106-086	ST8100 Build Up Frame - 2' H, Starter	17
0106-087	ST8100 Build Up Frame - 3' H, Continuous	17
0106-088	ST8100 Build Up Frame - 3' H, Starter	15



0106-084



0106-083

STORAGE RACKS

- Used for storing and transporting stage decks
- Vertical posts are removable
- Can be stacked
- Add casters for easy moving
- Also, hold rectangular and circular tables

PART #	DESCRIPTION	WT.
0110-274GY	Storage Rack - 44" L x 44" W x 57" H	150
0110-276GY	Storage Rack - 37" L x 44" W x 57" H	145
0110-277GY	Storage Rack - 37" L x 44" W x 69" H	157
0110-276GY	Storage Rack - 37" L x 44" W x 57" H	145
0110-279R	Caster - 8", Rigid	14
0110-279S	Caster - 8", Swivel	13



0110-274GY



0110-279R



0110-279S

ST8100 STEEL STAGING SYSTEM

QUICK STAIR

- Fixed height unit
- Free standing
- Quick and easy to use
- Non-marring rubber base pads
- Back casters for easy rolling
- 2 Step - 12" H
- 3 Step - 18" H

PART #	DESCRIPTION	WT.
0105-37-12	Quick Stair - 2 Step	77
0105-37-18	Quick Stair - 3 Step	103



0105-37-12



0105-37-18

ULTRA STAIR

- Adjustable height unit
- Can become free standing with additional parts
- Detachable handrails
- Folds flat for storing and transporting
- Non-marring rubber base pads
- 3 Step - 12" - 21" H
- 4 Step - 16" - 28" H
- 6 Step - 24" - 42" H
- 8 Step - 32" - 56" H
- 10 Step - 40" - 70" H

PART #	DESCRIPTION	WT.
0106-450-3	ST8100 Ultra Stair - 3 Step	120
0106-450-4	ST8100 Ultra Stair - 4 Step	145
0106-450-6	ST8100 Ultra Stair - 6 Step	210
0106-450-8	ST8100 Ultra Stair - 8 Step	258
0106-450-10	ST8100 Ultra Stair - 10 Step	320

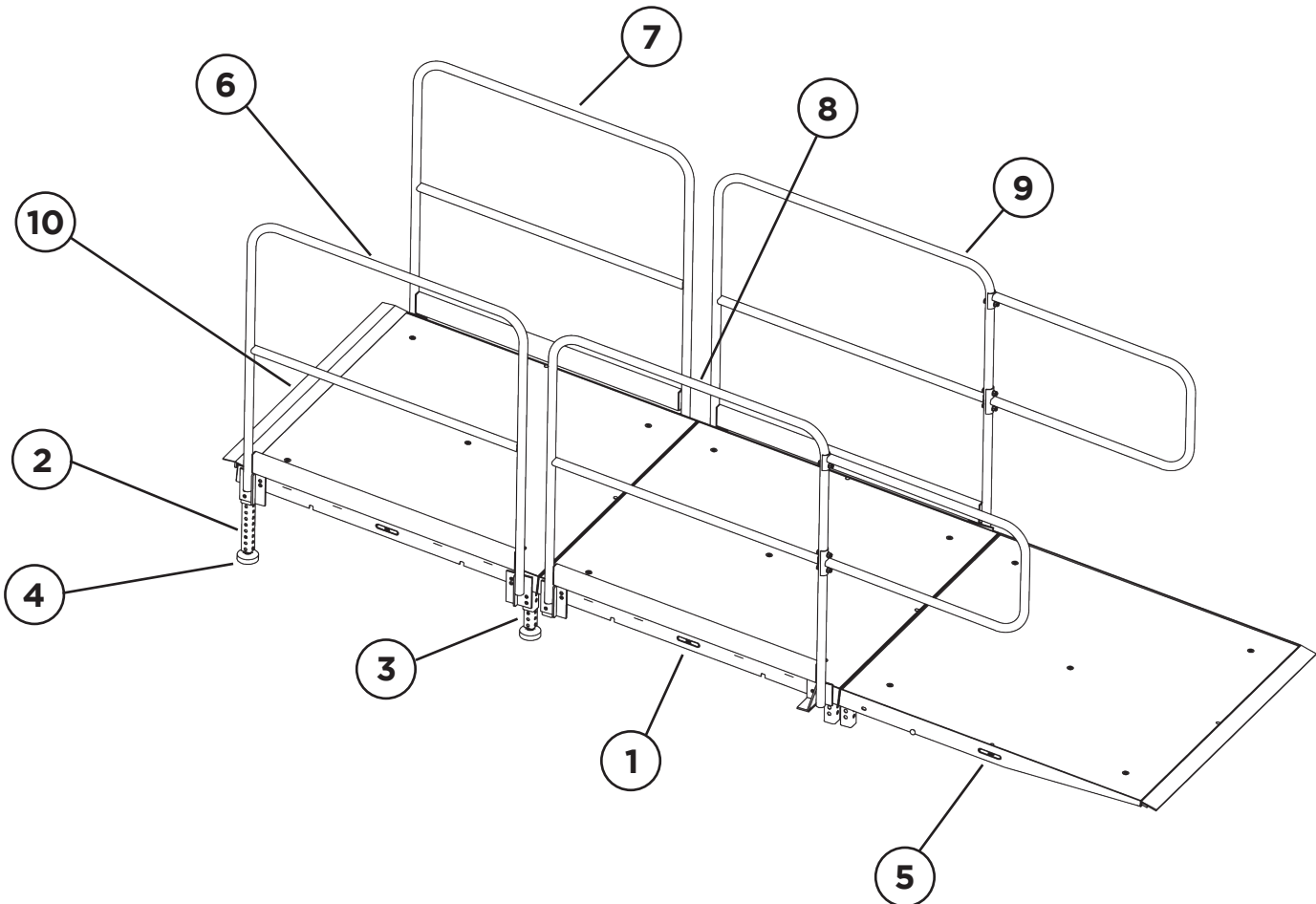


0106-450-4

ACCESS RAMP

- Compatible with ST8100 system
- Free standing - no attaching needed
- Not ADA compliant

PART #	DESCRIPTION	WT.
0106-064-7	ST8100 Ramp Deck - 4' x 4' ①	69
0065-0298-013	ST8100 Leg/AS2100 Sleeve - 1 1/2" x 13" L ②	2
0065-0298-008	ST8100 Leg/AS2100 Sleeve - 1 1/2" x 8" L ③	1
0030-086	Stage Base Pad without Collar ④	1
0106-401-7	ST8100 Ramp Deck - 4' x 4', Dolly Ramp ⑤	123
0106-234-1	ST8100 Ramp Guardrail - 4' W, Horizontal, Left ⑥	27
0106-234-2	ST8100 Ramp Guardrail - 4' W, Horizontal, Right ⑦	27
0106-237-1	ST8100 Ramp Guardrail Starter - 4' W, Horizontal, Left ⑧	29
0106-237-2	ST8100 Ramp Guardrail Starter - 4' W, Horizontal, Right ⑨	29
0105-45-0016	Ramp - Filler Plate ⑩	9



ST8100 STEEL STAGING SYSTEM

NOTES



125 Taylor Parkway
Archbold, Ohio 43502

Phone: 419.445.8915
Toll Free: 800.537.0540
Fax: 419.445.0367

Email: sales@biljax.com

www.biljax.com

©2022 BilJax, Inc.

VER: 040522